

DEVICE GUIDE

FORESIGHT INTELLIGENCE
HARDWARE OPTIONS

ATU-RB-8

MINI BATTERY POWERED ASSET TRACKER



FEATURES:

- Network: LTE-M, WiFi and NB-IoT
- Easy, quick installation
- Stainless Steel ruggedized cage available
- Rugged and waterproof IP68 | IK07 rated housing ensures device can withstand impact and brief submersion

ADD-ON-FEATURE:

- Utilization tracking via accelerometer

APPLICATIONS:

- Covert | compact battery powered asset tracking
- Non-Powered assets, tools, attachments, storage containers, cargo boxes, solar light towers, welding rigs, generators and more

BATTERY LIFE ESTIMATES:

- Once Daily | 10+ Years
- Movement Based | 3.5 Years
- Hourly | 2 years

DIMENSIONS

Length	3.21 in
Width	2.48 in
Height	0.94 in
Weight	2.9 oz

SPECIFICATIONS

Power Source	Replaceable AAA L92 Batteries
Calling Frequency	Adjustable
Ingress Protection Rating	IP68 - IK07
Weather Resistant	<input checked="" type="checkbox"/>
Shock & Vibration Resistant	<input checked="" type="checkbox"/>
Operating Temperature	-22°F to 140°F

ATU-RB-10

BATTERY POWERED ASSET TRACKER



FEATURES:

- Network: LTE-M, WiFi and NB-IoT
- Easy, quick installation
- Rugged and waterproof. IP68 | IK07 rated housing ensures device can withstand impact and brief submersion

APPLICATIONS:

- Covert, long life battery powered asset tracking
- Trailers, non-Powered assets, tools, attachments, storage containers, cargo boxes, solar light towers, welding rigs, generators and more

BATTERY LIFE ESTIMATES:

- Once Daily | 10+ Years
- Movement Based | 7 Years
- Hourly | 4.5 years

DIMENSIONS

Length	4.25 in
Width	3.39 in
Height	1.18 in
Weight	6.85 oz

SPECIFICATIONS

Power Source	Replaceable AA L91 Batteries
Calling Frequency	Adjustable
Ingress Protection Rating	IP68 - IK07
Weather Resistant	■
Shock & Vibration Resistant	■
Operating Temperature	-22°F to 140°F

BATTERY POWERED ASSET TRACKER WITH RUGGEDIZED CAGE



ATU-RB-8 FEATURES:

- Network: LTE-M, WiFi and NB-IoT
- Easy, quick installation
- Rugged and waterproof. IP68 | IK07 rated housing ensures device can withstand impact and brief submersion

DIMENSIONS	ATU-RB-8	CAGE
Length	3.3 in	5.5 in
Width	2.5 in	3.0 in
Height	.94 in	1.81 in
Weight	2.9 oz	1lb 13oz

ADD-ON-FEATURE:

- Utilization tracking via accelerometer

T.A.C. CAGE FEATURES:

- Weld-on base plate
- Stainless Steel ruggedized cage
- Stainless Steel cover with relief cuts for excellent cell and GPS reception
- Rugged ABS Insert for further protection against the elements

SPECIFICATIONS	ATU-RB-8	CAGE
Power Source	Replaceable AAA L92 Batteries	
Calling Frequency	Adjustable	
Ruggedized Enclosure	■	Protects against pressure washing, UV and impact
Shock & Vibration Resistant	■	Stainless Steel

APPLICATIONS:

- Buckets, demo shears, hydraulic hammers, installations needing a durable, tough asset tracking solution

BATTERY LIFE ESTIMATES:

- Once Daily | 10+ Years
- Movement Based | 3.5 Years
- Hourly | 2 years

TTU-2830

RUGGED HARD-WIRED ASSET TRACKER



FEATURES:

- Network: LTE-M, and CAT-1
- Easy, quick 3 wire installation (base install)
- Rechargeable backup battery (5.2Ah)
- 500 message cycles in full battery
- 24/hr ping rate when stationary
- Tamper alert

ADD-ON-FEATURE:

- Advanced I/O Capable with driver ID and starter kill options (additional cabling and installation required)

APPLICATIONS:

- Powered heavy duty equipment
- Large generators or compressors
- Applications with available power source
- Trailer tracking | Advanced theft alerts

DIMENSIONS

Length	4.5 in
Width	3.2 in
Height	1.6 in
Weight	20.45 oz

SPECIFICATIONS

Power Source	3 wire installation
Calling Frequency	2 min while in use
Advanced I/O Capable with driver ID and starter kill options	■
Ingress Protection Rating	IP66
Weather Resistant	■
Shock & Vibration Resistant	■
Operating Temperature	-22°F to 140°F
Data: Engine hours or Mileage	■

LMU-3040

OBDII POWERED ASSET TRACKER



FEATURES:

- Network: LTE CAT-1
- Easy, self installation via OBDII port
- 24/hr ping rate when stationary
- Tamper alert | motion event
- Triple axis accelerometer | motion sensor

APPLICATIONS:

- Ideal for light duty vehicles with OBDII port. For Vehicles 1996 or newer. Harness recommended for concealed installation in dash
- Engine data from OBDII: Vehicle engine based data such as fuel, fault codes and more available. Varies according to OEM/make/model/VIN.

DIMENSIONS

Length	1.88 in
Width	2.5 in
Height	1.14 in
Weight	2.54 oz

SPECIFICATIONS

Power Source	OBDII with internal backup battery
Calling Frequency	Every 2 minutes while in use
Tamper Alert	■
Shock & Vibration Resistant	■
Data: Engine hours and Mileage	■

LMU-3640

ON ROAD ASSETS | J1939 EQUIPPED HEAVY DUTY VEHICLES



FEATURES:

- Network: LTE, CAT-1
- Quick and easy installation. Built in cellular and GPS antennas. Powered by plug and play J1939 harness (various versions available)
- Rechargeable backup battery (1 Ah)
- 24/hr ping rate when stationary
- Tamper alert

APPLICATIONS:

- Heavy duty vehicles (2000+) with J1939
- Engine based data such as fuel and fault codes. Information available varies according to OEM make, model and VIN.

DIMENSIONS

Length	5.7 in
Width	2.1 in
Height	1.3 in
Weight	5.5 oz

SPECIFICATIONS

Power Source	J1939
Calling Frequency	2 min while in use
Tamper Alert	■
Advanced I/O Capable with driver ID and starter kill options	■
Shock & Vibration Resistant	■
Operating Temperature	-22°F to 140°F
Data: Engine hours or Mileage	■

ELD SOLUTION

INCLUDES TABLET, CRADLE AND ONBOARD LMU-3640 TELEMATICS



FEATURES:

- Fully Compliant with FMCSA & Canadian Certified
- Worry-Free, Always-Compliant Solution
- 25+ Pre-loaded rule sets including Alaska, California, Short Hail and Canada
- Network: LTE, CAT-1
- Rechargeable backup battery (1 Ah)
- 24/hr ping rate when stationary
- Tamper alert
- Removable tablet for ELD requirements and out of cab work (inspections and jobs)
- Software locked tablet for security

DIMENSIONS

Length	9.0 in
Width	3.0 in
Height	8.0 in
Weight	3lb 2oz

SPECIFICATIONS

Video Resolution	1080p
Recording Mode	Continuous, event, dual mode
Power Input	12V-24V
Viewing Angle	150°
Memory	32GB Internal with MicroSD expansion
Operating conditions	Day Night
Operating Temperature	-5°F to 140°F

HMU-3640

OFF ROAD ASSETS | J1939 EQUIPPED HEAVY DUTY VEHICLES



FEATURES:

- Network: LTE, CAT-1
- Wired device with internal high temperature .5 Ah NiMH battery
- Ultra rugged and waterproof device rated to withstand construction grade environments, thermals and shock
- Tamper alert

APPLICATIONS:

- Heavy-duty off road equipment (model year 2000+ with J1939)
- Engine based data such as fuel and fault codes. Information available varies according to OEM make, model and VIN.

DIMENSIONS

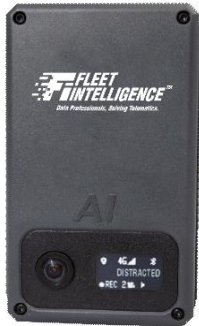
Length	7.0 in
Width	3.0 in
Height	1.57 in
Weight	8.8 oz

SPECIFICATIONS

Power Source	J1939 With internal battery backup
Calling Frequency	2 min while in use
Tamper Alert	■
Ingress Protection Rating	IP66 - IP67
Weather Resistant	■
Shock & Vibration Resistant	■
Operating Temperature	-22°F to 167°F
Data: Engine hours or Mileage	■

AI CAMERA

ROAD AND CAB (DRIVER) DUAL FACING CAMERA



FEATURES:

- Network: LTE + WiFi + Bluetooth LE
- Integrated dual camera device
- IR Sensor for low light operation
- Event Triggers: Speed, G-Force, Accident, Panic, AI Triggers and more
- Facial recognition, drowsy, fatigue, smoking, drinking, cellphone use, texting and general distracted driving
- LED Display for camera status and in-cab alerts
- Camera mic on/off feature
- Panic Button
- Custom Accelerometer settings for vehicle types

APPLICATIONS:

- On-road light and heavy duty fleet and company vehicles

DIMENSIONS

Length	4.75 in
Width	2.87 in
Height	1.7 in
Weight	15.5 oz

SPECIFICATIONS

Video Resolution	1080p
Recording Mode	Continuous, event, dual mode
Power Input	12V-24V
Viewing Angle	140°Internal 168°External
Memory	2GB Memory 64GB Storage
Operating conditions	Day Night
AI Features	●

CP2-NA-LTE

ROAD FACING CAMERA SYSTEM



FEATURES:

- Network: LTE | CAT 1, WiFi and BT
- 1080P HD Video with 150° wide angle lens
- Panic Button and manual recording
- Records harsh driving events, accidents, hard acceleration, hard braking and hard turns
- Use up to 128GB of SD storage for up to 166 hours of recording history
- Internal mic for audio recording
- Tamper resistant design
- Custom Accelerometer settings for vehicle types
- Featuring long life super capacitors

PROTECTION AGAINST:

- Staged accidents
- False or exaggerated claims
- Conflicting incident reports
- Driving allegations such as speeding, signal violations, swerving etc.

DIMENSIONS

Length	6.5 in
Width	2.5 in
Height	2.5 in
Weight	6.3 oz

SPECIFICATIONS

Video Resolution	1080p
Recording Mode	Continuous, event, dual mode
Power Input	12V-24V
Viewing Angle	150°
Memory	64GB SD Card Included
Operating conditions	Day Night
Operating Temperature	14°F to 131°F

SVA040-D

ADD-ON DRIVER FACING CAMERA FOR CP2-NA-LTE



FEATURES:

- 1.3MP Sony CMOS Sensor
- Digital noise reduction
- Easily mounts with 3M adhesive tape
- 12 IR LED’s for nighttime visibility
- Direct cable connection to CP2-NA-LTE camera
- Tamper resistant design

DIMENSIONS

Length	2.74 in
Width	2.39 in
Height	2.81 in
Weight	3.04 oz

SPECIFICATIONS

Video Resolution	650 TV Line
Recording Mode	Continuous, event, dual mode
Power Input	From CP2-NA-LTE camera
Viewing Angle	145°
Operating conditions	Day Night

IECEX | ATEX ZONE 0 CERTIFIED ULTRA RUGGED ASSET TRACKER



DESIGNED FOR:

Offshore containers, frac tanks, wellhead equipment, trailers, chemical totes, sand traps, ISO containers, mining equipment and general ultra-rugged tracking in remote areas lacking cellular coverage

CERTIFICATIONS:

ATEX: EN 60079-0

60079-11, CE0359 II

1 G Ex ia IIC T4 Ga

$-40^{\circ}\text{C} \leq T_a \leq 64^{\circ}\text{C}$, IP68

IECEX: IEC 60079-0, 60079-11

Ex ia IIC T4 Ga

$-40^{\circ}\text{C} \leq T_a \leq 64^{\circ}\text{C}$

OSHA Hazardous Location Classification:

Class I: Division 1 Gas Groups A-D T4

Class I: Zone 0 | AEx ia IIC T4 Ga

USA Hazardous Location Safety:

UL 60079-0, UL 60079-11, UL 913

Canada Hazardous Location Safety: CSA 22.2

No. 60079-0,11, No. 157-92

FCC Part 15/25 Industry Canada, Rss210/ECES-003, CE R&TTE Directive 1999/5/EC (EU/ETSI), Brazil ANATEL, AUS/NZ RCM-CISPE22



DIMENSIONS

Length 4.65 in

Width 3.37 in

Height 1.32 in

Weight 1lb 13oz

SPECIFICATIONS

Power Source Internal Battery

Operating Temperature -40°F to 185°F

Calling Frequency Configurable

Ingress Protection Rating IP68 | IP69K

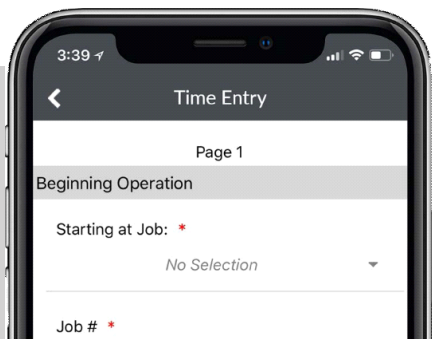
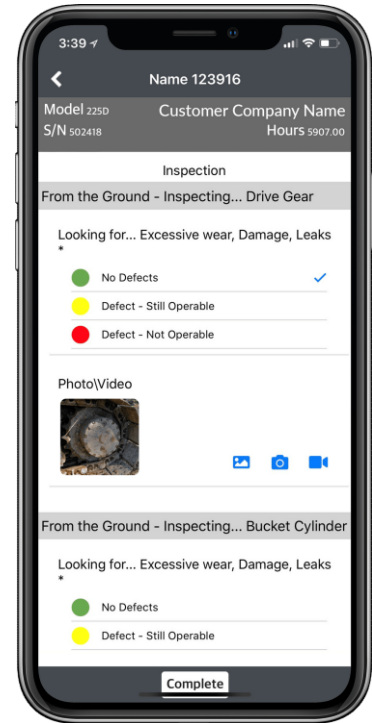
Shock & Vibration Resistant ☒

Weather Resistant ☒

Network Globalstar Simplex

INSPECT 2.0

- Fleet Intelligence features a completely customizable mobile inspection app that is built to customer's needs
- The simple and easy to use app is offered as a stand alone product or fully integrated into the Fleet Intelligence platform, work order module and maintenance suite
- FI Inspect 2.0 features enhanced self service, allowing you to build and modify your own templates. Templates can be built for an entire asset class or drilled down to individual assets and area of the jobsite or Plant
- The app includes access to a map layer dashboard where inspection alerts are in real time
- Fully optimized to meet OSHA and MSHA compliance standards and allows for multilingual inspections in English, Spanish and French.
- Unlimited picture and video cloud based storage
- Easily exports inspection reports to Excel or CSV files



Timecard Integration

Timecard entry is incorporated into the Inspect 2.0 app, allowing you to get more done in one place.

Timecards are integrated directly into the Fleet Intelligence platform or other management systems.

ASSET TAGS

EXTREME DURABILITY STICKERS



DIMENSIONS

Length | Width

1" X 2"

FEATURES:

- Durable, flexible 3mil white polyester with 6 mil Avery Dennison Adhesive
- Conforms to curved surfaces
- Rated for indoor / outdoor use (5+ Years)
- Digital, high quality print
- Temperature range -40F to 190F
- Consecutive numbers or variable data printing available
- Barcode or QR codes available
- Metal, laser etched tags available for an additional cost

APPLICATIONS:

- Handheld tools
- Stationary equipment
- inventory

ADDITIONAL INFORMATION:

- Requires FI Inspect 2.0 App

